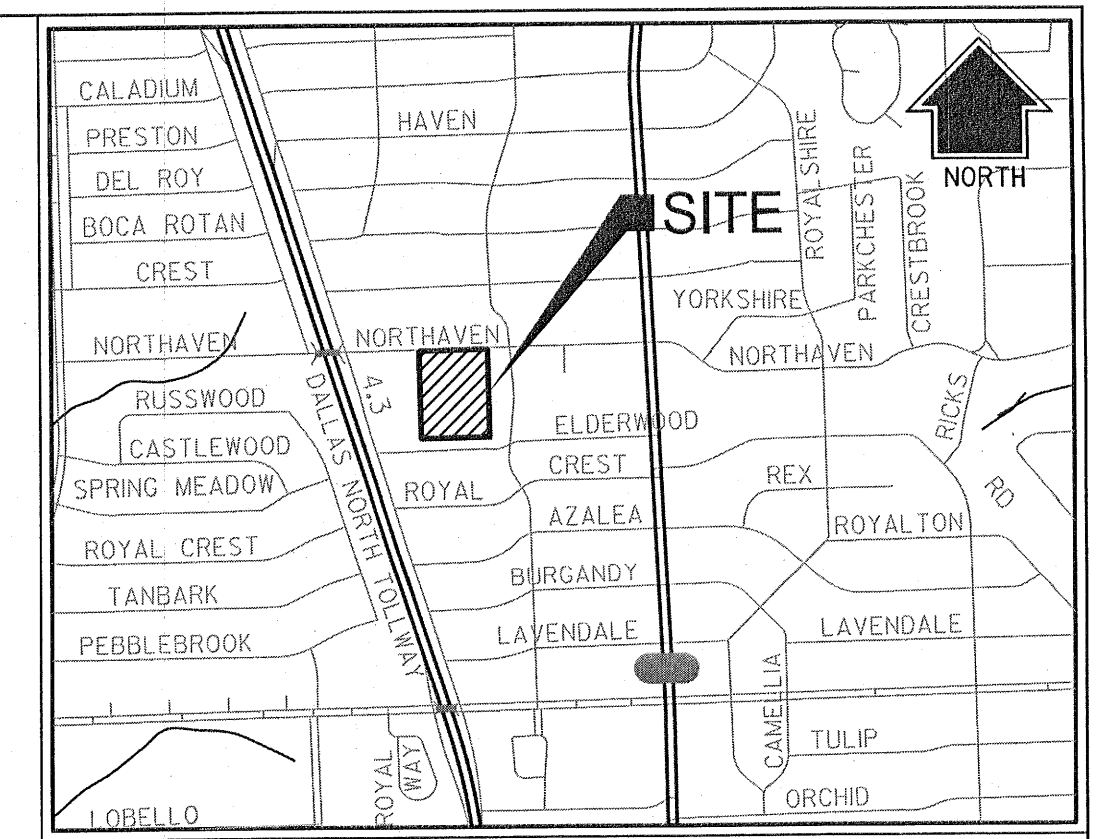
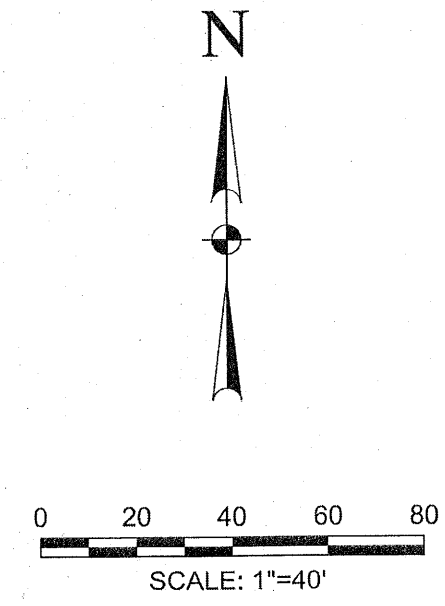


DATA:	
USE:	ELECTRIC SUBSTATION
LAND AREA:	6.227 ACRES
FLOOR AREA:	1296 SQUARE FEET
MAX. HEIGHT:	95 FEET

CAUTION!!!
EXISTING UTILITIES IN THE AREA, UTILITIES LOCATION SHOWN ARE SCHEMATIC IN NATURE AND MAY NOT ACCURATELY REFLECT SIZE, HORIZONTAL, AND/OR VERTICAL LOCATION. THE CONTRACTOR SHALL VERIFY THE EXACT LOCATION PRIOR TO BEGINNING CONSTRUCTION. CONTACT AFFECTED UTILITIES AT LEAST 48 HOURS PRIOR TO CONSTRUCTION IN THIS AREA. (1-800-DIG-TESS)

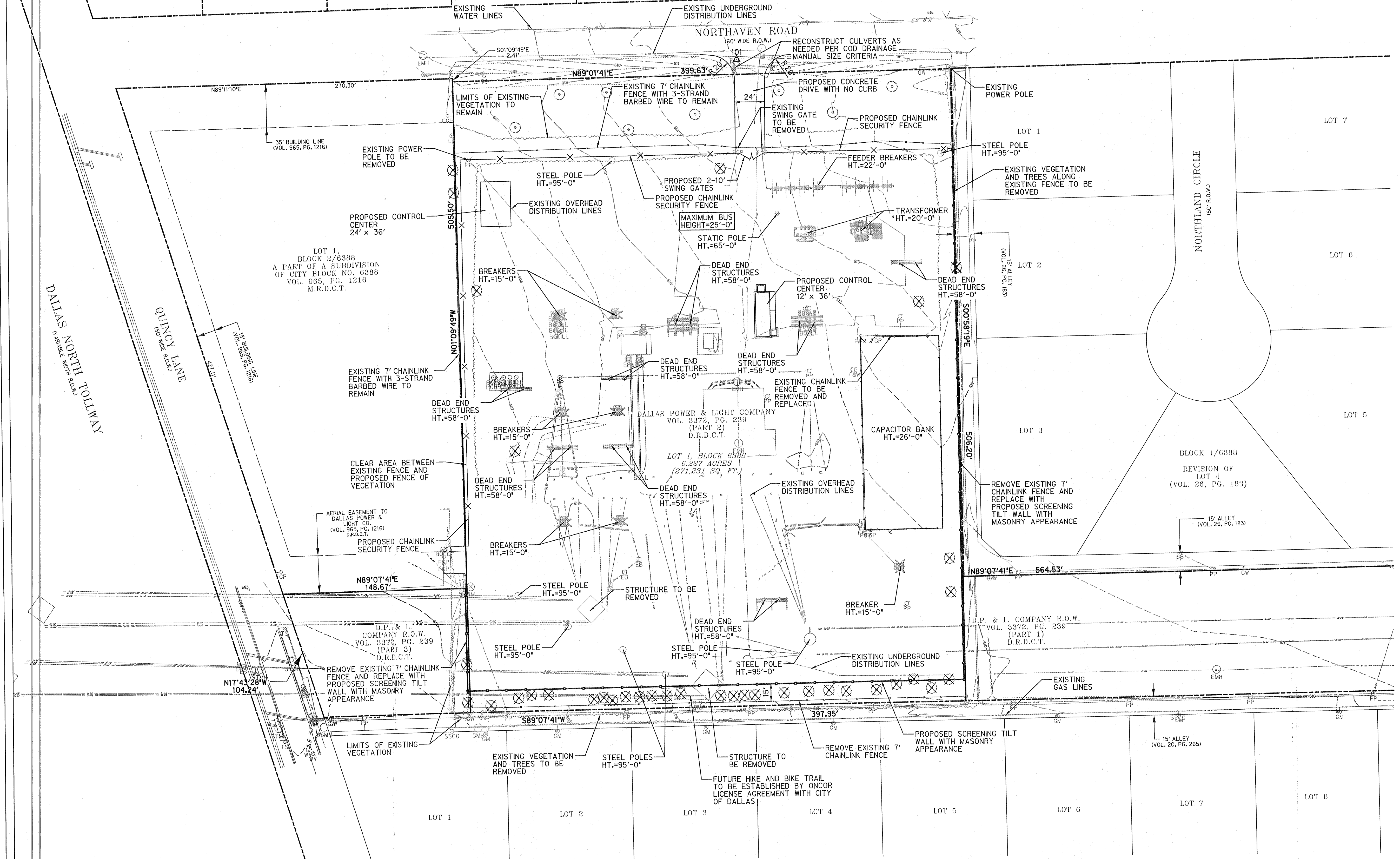


LOCATION MAP
N.T.S.

LEGEND:

---	EXISTING FIBER OPTIC
---	EXISTING TELEPHONE LINE
---	EXISTING GAS LINE
---	EXISTING SANITARY SEWER
---	EXISTING OVERHEAD ELECTRIC
---	EXISTING UNDERGROUND ELECTRIC
---	EXISTING WATER LINE
---	STORM SEWER
---	MAJOR CONTOUR LINE
---	MINOR CONTOUR LINE
---	EXISTING MAJOR CONTOUR LINE
---	EXISTING MINOR CONTOUR LINE
---	PROPERTY LINE
---	EASEMENT LINE
---	ASPHALT
PP	POWER POLE
SM	SANITARY SEWER MANHOLE
WV	WATER VALVE
FH	FIRE HYDRANT
WM	WATER METER
TR	TREE TO REMAIN
TRX	TREE TO BE REMOVED

- NOTES**
1. ALL EXISTING UTILITIES ARE SHOWN SCHEMATICALLY AND ARE FOR THE CONTRACTORS GUIDANCE ONLY. THE CONTRACTOR SHALL VERIFY THE LOCATION, SIZE, AND MATERIAL OF ALL UTILITIES AFFECTED BY CONSTRUCTION PRIOR TO BEGINNING CONSTRUCTION. CONTRACTOR SHALL CONTACT ALL AFFECTED UTILITIES 48 HR'S, PRIOR TO CONSTRUCTION.
 2. ALL WORK AND MATERIAL SHALL BE IN ACCORDANCE WITH CITY OF DALLAS STANDARD SPECIFICATIONS AND GENERAL DESIGN STANDARDS.
 3. ALL DIMENSIONS ARE FROM FACE OF CURB/EDGE OF GRAVEL UNLESS OTHERWISE NOTED.



SITE PLAN
ONCOR NORTHAVEN SUBSTATION
LOT 1, BLOCK 6388
AN ADDITION TO THE CITY OF DALLAS
SITUATED IN THE
JOHN W. SMITH SURVEY, ABSTRACT NO. 1336
CITY OF DALLAS, DALLAS COUNTY, TEXAS
FOR
ONCOR ELECTRIC DELIVERY COMPANY

BENCHMARKS

#	NORTHING	EASTING	ELEVATION	DESCRIPTION
100	7016331.9855	2488288.1333	617.85	SIRTP4
101	7016286.7085	2487500.5512	612.84	SIRTP4

SURVEYOR
HALFF ASSOCIATES, INC.
3803 PARKWOOD BLVD., SUITE 800
FRISCO, TX 75034
CONTACT: GETSY J. SUTHAN
TEL: (214) 346-6200

ENGINEER
HALFF ASSOCIATES, INC.
3803 PARKWOOD BLVD., SUITE 800
FRISCO, TX 75034
CONTACT: BRIAN M. SATAGAJ, P.E.
TEL: (214) 217-6463
FAX: (214) 618-4574

DEVELOPER
ONCOR ELECTRIC DELIVERY COMPANY
115 W. 7TH STREET, SUITE 1125
FORT WORTH, TX 76102
CONTACT: JILL ALVAREZ
TEL: (817) 215-6061
JILL.ALVAREZ@ONCOR.COM

DATE: 11/3/2017 AVO: 30743

